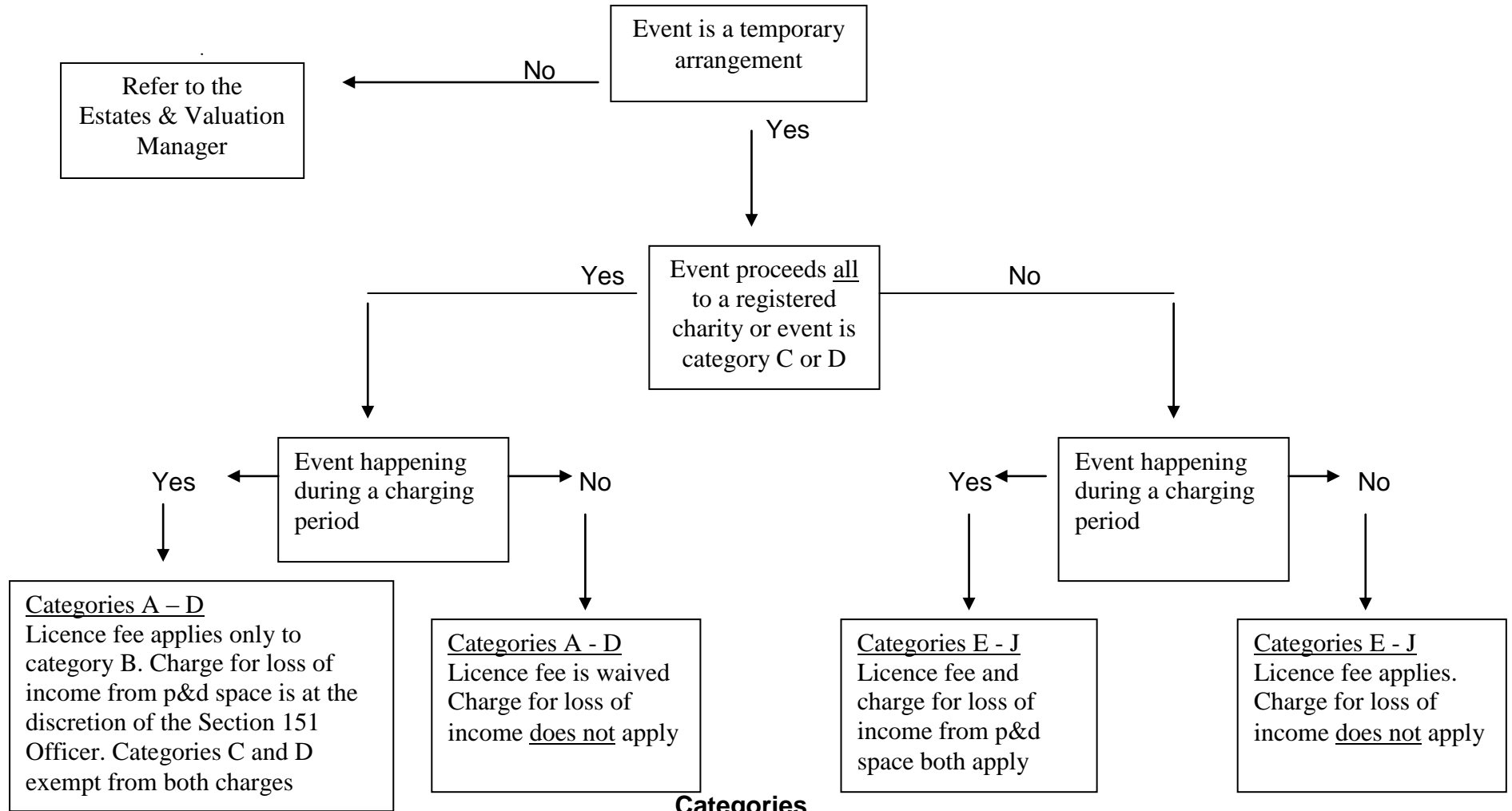


# LICENCE FOR USE OF CAR PARK – FEES AND CHARGES



## Categories

- A** Fundraising, non profit making – small scale event - (less than 7 parking bays)
- B** Fundraising, non profit making – large scale event (more than 7 parking bays)
- C** Health Awareness
- D** Safety Awareness
- E** Tourism and leisure
- F** Commercial enterprise
- G** Resident - property access
- H** Business – property access
- I** Wayleave
- J** Utilities / compounds or essential works